

# BUILT-INS BY THE FOOT

- *Sold by the Foot*
- *Choose Trim*
- *Choose Configuration*
- *Choose Species*

**Configuration A:** Basic bookcase with four adjustable shelves. The cabinet depth is 12" deep. Width and height customizable up to 48" wide by 96" tall.

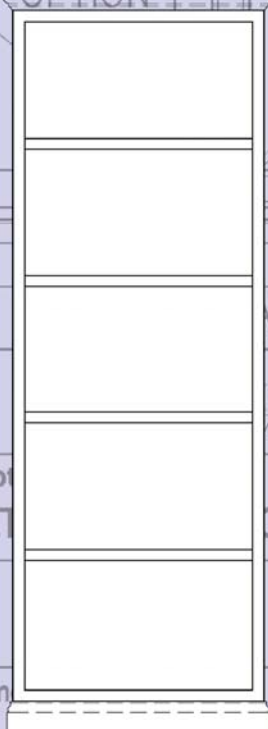
**Configuration B:** Bookcase with three adjustable shelves over base cabinet with one adjustable shelf. The upper bookcase is 12" deep and the lower cabinet is up to 24" deep. Width and height customizable up to 48" wide by 96" tall.

**Configuration C:** Storage cabinet with four adjustable shelves. The cabinet depth is 12" or 18" deep. Width and height customizable up to 48" wide by 96" tall.

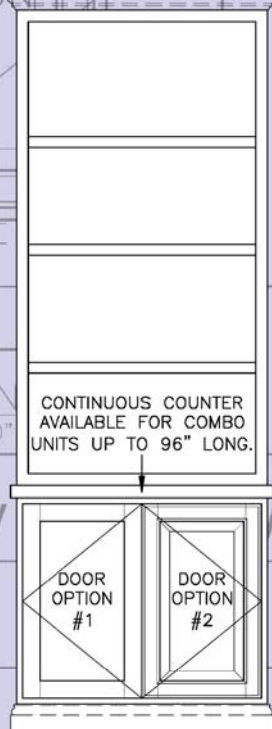
**Configuration D:** Mud Room / Lockers with cubby bench below and storage cubbies above. Intermediate cabinet includes hook rail for shaker pegs or hooks (not included). The upper cabinet is 12" deep and the base cabinet is up to 24" deep. Width and height are customizable up to 72" wide and 96" high. Optional drawers are available for the base cubbies. The base cabinet is also available as a bench only up to 96" wide.

Top and bottom rails can be modified to accommodate base and crown (base and crown not included). Counter tops and nose shipped loose. Continuous counter tops available for combinations up to 96" wide. Optional finished ends are available for open end installations. All configurations can be installed side by side to create custom systems.

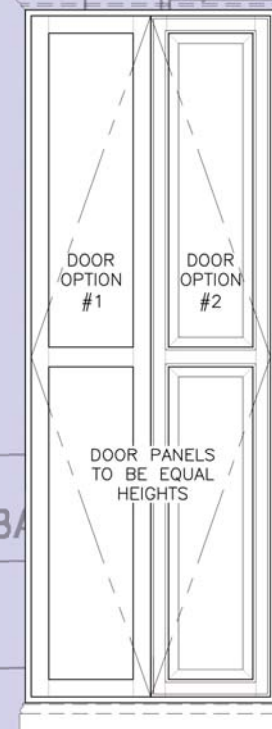
**Configuration A:**



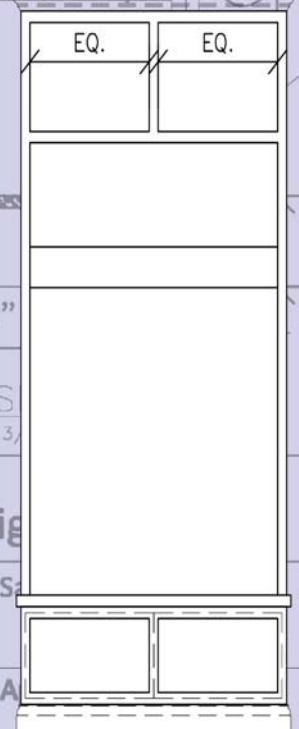
**Configuration B:**



**Configuration C:**



**Configuration D:**





# BUILT-INS BY THE FOOT

→ *Sold by the Foot*

→ *Choose Trim*

→ *Choose Configuration*

→ *Choose Species*

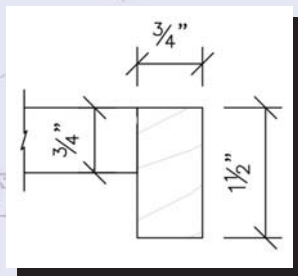
**Trim Option #1:** Contemporary / Shaker style includes a flat panel door with square sticking and S4S shelf and counter nose.

**Trim Option #2:** Traditional style includes a raised panel door and traditional shelf and counter nose.

*You can mix and match options.*

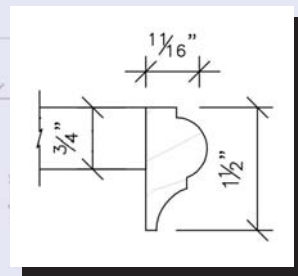
### Trim Option #1:

Contemporary / Shaker style



### Trim Option #2:

Traditional style



*All styles available in primed paint grade and unfinished oak, cherry and mahogany.*



OPTION 1  
CONTEMPORARY/  
SHAKER

OPTION 2  
TRADITIONAL

FINGER PULL EDGE  
Available w/ both door options

TW Perry's Custom Millshop designs and manufactures high quality millwork including but not limited to, custom entry systems, mouldings, mantels, cabinetry, paneling and wainscoting, libraries, entertainment centers and rooms, wine cellars and distinctive architectural features. If you imagine it, TW Perry can build it. The Millshop's production door shop offers various styles of interior solid core and hollow core doors. TW Perry's Trustile Door line is one of the finest in the nation, and they are a national leader in Trustile custom and semi-custom door production.

ANNAPOLIS  
DESIGN STUDIO  
208 West Street  
Annapolis, MD 21401  
443-808-1481

BALTIMORE  
4321 Fitch Avenue  
Baltimore, MD 21236  
410.350.0750

CHEVY CHASE  
8519 Connecticut Avenue  
Chevy Chase, MD 20815  
301.652.2600

GAITHERSBURG  
8101 Snouffer School Road  
Gaithersburg, MD 20879  
301.840.9600

LEESBURG  
41 Catocin Circle, SE  
Leesburg, VA 20175  
703.777.3030

SPRINGFIELD  
7740 Southern Drive  
Springfield, VA 22150  
703.451.6500

[www.twperry.com](http://www.twperry.com)

OPTION 1  
(Contemporary/Shaker)

OPTION 2  
(Traditional)